



Cambridge International Examinations
Cambridge Secondary 1 Checkpoint

CANDIDATE
NAME

CENTRE
NUMBER

--	--	--	--	--

CANDIDATE
NUMBER

--	--	--	--



MATHEMATICS

1112/02

Paper 2

April 2016

1 hour

Candidates answer on the Question Paper.

Additional Materials: Calculator
 Geometrical instruments
 Tracing paper (optional)

READ THESE INSTRUCTIONS FIRST

Write your Centre number, candidate number and name on all the work you hand in.

Write in dark blue or black pen.

You may use an HB pencil for any diagrams, graphs or rough working.

Do not use staples, paper clips, glue or correction fluid.

DO **NOT** WRITE IN ANY BARCODES.

Answer **all** questions.

Calculator allowed.

You should show all your working in the booklet.

The number of marks is given in brackets [] at the end of each question or part question.

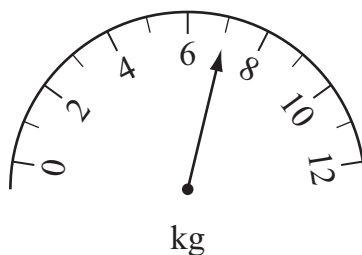
The total number of marks for this paper is 50.

This document consists of **15** printed pages and **1** blank page.

2

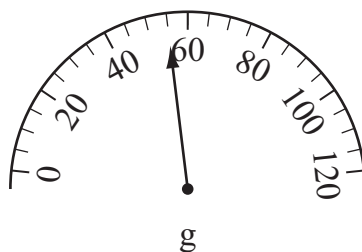
1 Write the mass shown on each scale.

(a)



..... kg [1]

(b)



..... g [1]

2 Write these measurements in order, from smallest to largest.

30 cm

0.35 m

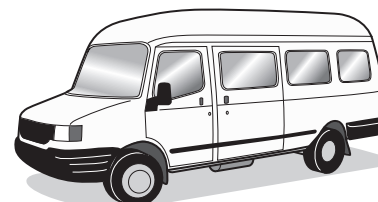
320 mm

28 cm

..... smallest largest [1]

3 There are 149 students in Hussein’s school.
A minibus can seat 16 students.

How many minibuses are needed to seat all the students?



..... minibuses [1]

3

- 4 Sam measures the lengths of lizards found living in two different areas. The table shows his results.

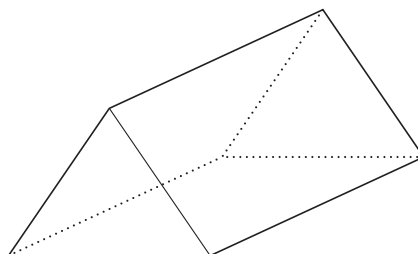
	Mean	Range
Area 1	16.4 cm	5.5 cm
Area 2	13.7 cm	6.8 cm

Tick (✓) to show which box matches each statement.

	True	False	Cannot tell
Area 2 has longer lizards on average.	<input type="checkbox"/>	<input type="checkbox"/>	<input type="checkbox"/>
The lengths of lizards in Area 1 are less varied.	<input type="checkbox"/>	<input type="checkbox"/>	<input type="checkbox"/>
The longest of all the lizards found comes from Area 1	<input type="checkbox"/>	<input type="checkbox"/>	<input type="checkbox"/>

[2]

- 5 A triangular prism has 6 vertices, 5 faces and 9 edges.



A **different prism** has 12 vertices.

Find the number of edges.

..... edges [1]

4

- 6 Nima takes the bus to work each morning.
 Nima is planning an investigation to see how many passengers use her bus each day.
 She designs this frequency table to record her data.

Number of passengers	Tally
1 to 8	
9 to 16	
17 to	
..... to	

Complete the **first column** so that the intervals have equal class widths. [2]

- 7 Kendra has b birds, c cats and r rabbits.

(a) The number of birds and cats are connected by the equation $c = b + 3$

Tick (✓) the true statement.

- Kendra has 3 more birds than cats.
- Kendra has 3 more cats than birds.
- Kendra has 1 cat and 3 birds.
- Kendra has 3 birds and 1 cat.

[1]

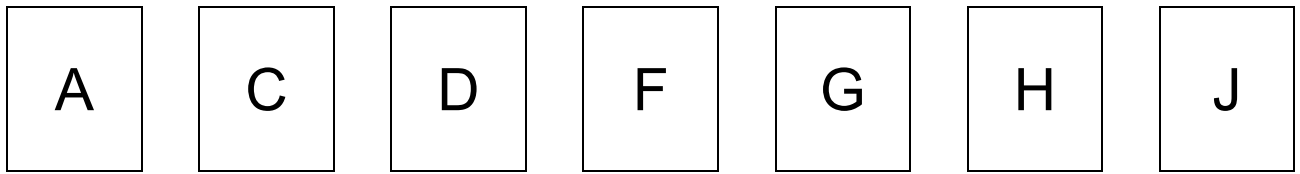
(b) Kendra has twice as many rabbits as birds.

Write this information as an equation involving b and r .

..... [1]

5

- 8 Jade has seven cards.
Each card is labelled with a letter.



Jade picks one of her cards at random.

Find the probability that the card she picks is

- (a) labelled F,

..... [1]

- (b) labelled with a letter that is in her name, JADE,

..... [1]

- (c) labelled with a letter that has **at least** one line of symmetry.

..... [1]

- 9 (a) Solve the equation $5x - 3 = 52$

$x =$

- (b) Solve the equation $6n + 3 = 2n + 31$

$n =$

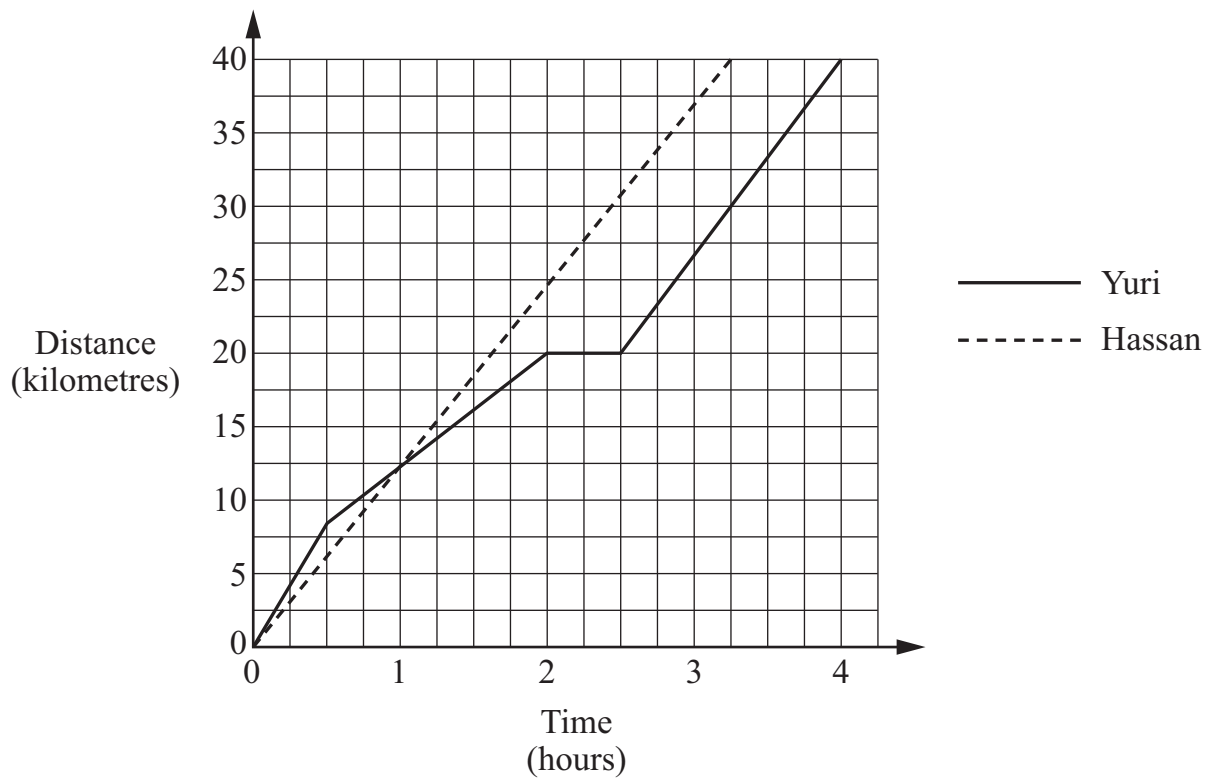
6

- 10 A farmer has 143 hectares of land.
62 hectares of this land is planted with vegetables.

Calculate the percentage of the farmer's land that is planted with vegetables.

..... % [1]

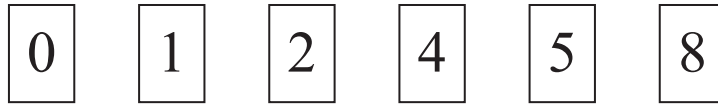
- 11 Yuri and Hassan take part in a 40 kilometre race.



Work out the difference in the number of **minutes** that Yuri and Hassan take to run the race.

..... minutes [1]

12 Here are some number cards.



Use each card **once** to complete the equivalences.

$$\frac{\boxed{}}{4} = 0.\boxed{}$$

$$\frac{\boxed{}}{5} = \boxed{}\boxed{}\%$$

[2]

13 Complete the table by writing the name of a quadrilateral that has the given property. Write the name of a **different** quadrilateral each time.

The first row has been completed for you.

Property	Name of quadrilateral
All sides equal	<i>Square</i>
Two sets of parallel sides	
Diagonals are equal in length	
Rotational symmetry of order 2	

[2]

8

14 Simplify

(a) $3a \times a$

..... [1]

(b) $7 - 5a + 2 + 3a$

..... [1]

15 (a) The values of x and y are directly proportional.
Complete the table by filling in the missing numbers.

x	3		30
y	96	128	

[2]

(b) Find the equation connecting x and y .

..... [1]

16 Some information about the areas of two farms is shown in the table.

Complete the table.

	Area in hectares	Area in square metres
Farm A	13.6	136 000
Farm B		1 965 000

[1]

9

17 The first five terms of a sequence are

7, 10, 13, 16, 19,

(a) What is the n th term of the sequence?

..... [1]

(b) Work out the 1000th term of the sequence.

..... [1]

18 This stem-and-leaf diagram shows the ages of a football first team.

First team							Second team							
					8	6	1							
			4	3	3	1	2							
		9	8	5	3	2	3							
							4							

Key

1 | 2 | 5

21 in first team

25 in second team

Here are the ages of the second team.

17 23 41 24 38 35 42 21 40 20 20

Complete the stem-and-leaf diagram.

[2]

10

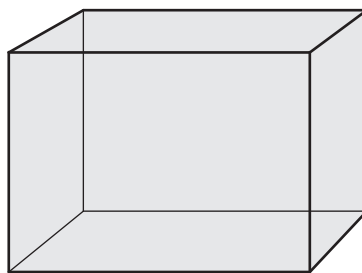
19 Here is a function $x \rightarrow x + 6$

The inverse of this function is $x \rightarrow x - 6$

Write down the inverse of the function $x \rightarrow \frac{x}{4}$

$x \rightarrow$ [1]

20 The dimensions of the inside of a fish tank are 120 cm by 60 cm by 75 cm.



Work out the volume of the space inside the tank, in **cubic metres**.

..... m³ [2]

11

- 21 The quantities x and y are in direct proportion.
When $x = 5$, $y = 30$

Choose from these cards to complete the sentence correctly.

increase	decrease	7.5	15	45	120
----------	----------	-----	----	----	-----

If x increases from 5 to 20 then y will from 30 to [1]

- 22 Put a ring around all the calculations that simplify to give 9^{10}

$$9^2 \times 9^7 \times 9$$

$$3^4 \times 3^6$$

$$9^{13} \div 9^3$$

$$9^{20} \div 9^2$$

$$9^5 \times 9^2$$

[2]

12

23 (a) Factorise fully

$$18 - 12e$$

..... [1]

(b) Expand and simplify

$$4c - 7(2d + c)$$

..... [2]

24 Oliver travels 180 kilometres in $2\frac{1}{4}$ hours.

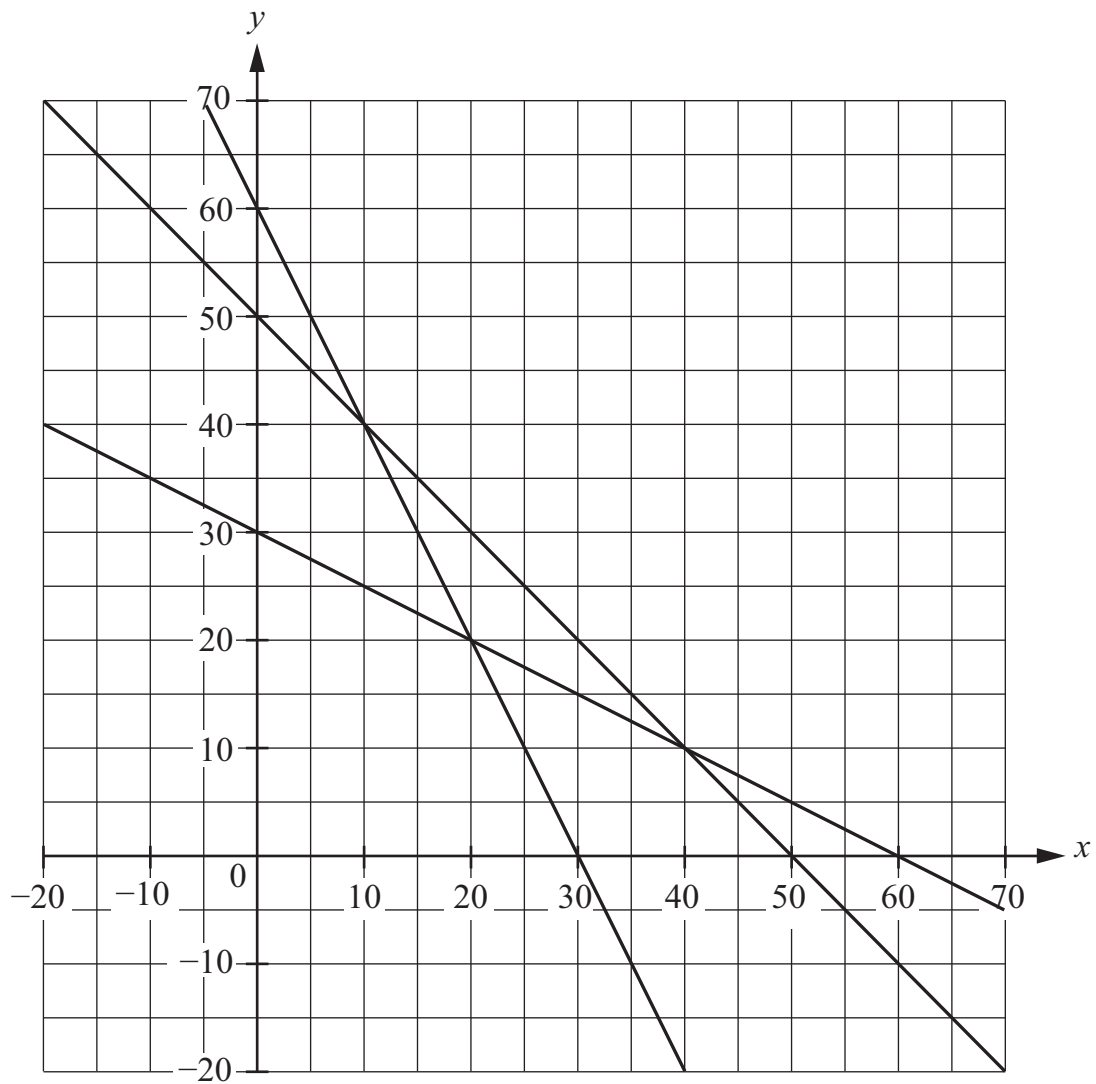
Work out his average speed.

Give your answer in kilometres per hour.

..... km/h [2]

13

25 Three lines are drawn on a graph.



Use the graph to solve simultaneously these two equations

$x + y = 50$ and $2x + y = 60$

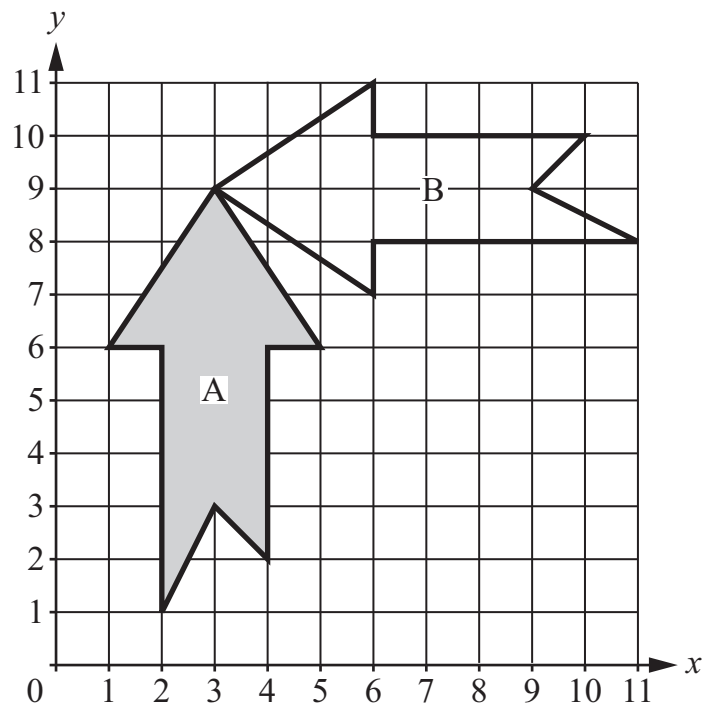
$x =$

$y =$

[1]

14

26 Arrow A maps onto arrow B using a **single** transformation.



Describe this transformation fully.

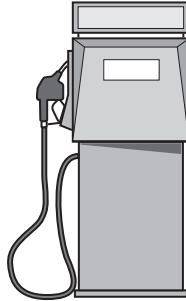
.....

..... [3]

15

- 27 Angelina, Lotte and Manuel all buy petrol.
They all pay the same price per litre.

Angelina buys 18.5 litres of petrol and pays \$27.01
Lotte pays \$40.15 for her petrol.
Manuel buys 28.3 litres of petrol.



Who buys more petrol, Lotte or Manuel?

Lotte Manuel

Show how you worked out your answer.

[2]

16**BLANK PAGE**

Permission to reproduce items where third-party owned material protected by copyright is included has been sought and cleared where possible. Every reasonable effort has been made by the publisher (UCLES) to trace copyright holders, but if any items requiring clearance have unwittingly been included, the publisher will be pleased to make amends at the earliest possible opportunity.

To avoid the issue of disclosure of answer-related information to candidates, all copyright acknowledgements are reproduced online in the Cambridge International Examinations Copyright Acknowledgements Booklet. This is produced for each series of examinations and is freely available to download at www.cie.org.uk after the live examination series.

Cambridge International Examinations is part of the Cambridge Assessment Group. Cambridge Assessment is the brand name of University of Cambridge Local Examinations Syndicate (UCLES), which is itself a department of the University of Cambridge.