

Edexcel IAL Biology A Level

Topic 2 : Membranes, Proteins, DNA and Gene Expression Notes



Gas exchange

Exchange surfaces

Multicellular organisms require **gas exchange systems** in order to obtain sufficient **oxygen** for respiring cells, and to expel the **carbon dioxide** created by these cells. In order to maximise the rate of exchange of substances, gas exchange surfaces are adapted to have a:

- **Large surface area to volume ratio** - the larger the ratio, the greater the surface area for the organism to carry out exchange, so a faster transfer of substances across the surface.
- **Short diffusion pathway** - a short distance for substances to move across means they move faster.
- **Steep concentration gradient** - a large difference in concentrations between 2 areas means diffusion of particles from an area of high concentration to an area of lower concentration occurs faster.

Fick's Law

The rate of diffusion is also dependent on the above features. This is shown by Fick's law that states that **the rate of diffusion is proportional to the surface area multiplied by difference in concentration, divided by the length of diffusion pathway.**

$$\text{Rate of Diffusion} \propto \frac{\text{surface area} \times \text{concentration difference}}{\text{distance}}$$

The mammalian lung

When we breathe, air enters the **mouth**, passes into the **trachea** which splits into 2 **bronchi**; one on the left side and one on the right side of the body. Each bronchus branches out into smaller **bronchioles** which end in **tiny air sacs called alveoli**, where **gas exchange** takes place. **Deoxygenated blood** flows into the alveoli, where carbon dioxide diffuses out of the capillary, through the alveolar membrane and into the surrounding air, down a concentration gradient. Oxygen moves in the opposite direction from the surrounding air and into the blood stream, making the blood **oxygenated**.

The extensive branching of vessels in the lungs means there are many alveoli - over 300 million in an average adult - this gives them a very **large surface area** which **increases the rate of diffusion** of oxygen into the blood, and carbon dioxide out of the blood.

The alveoli are adapted further. They have a **rich blood supply** from surrounding capillaries which maintains a **steep concentration gradient** between the blood in the capillaries and the air entering the lungs, which again increases the rate of diffusion.



Alveoli also have a **moist outer lining**, allowing gases to **dissolve** and **move across** their membrane **faster**.

Finally, alveoli have a wall of only **one cell thick** and **pores** in the endothelium, this creates a **short distance** for the gases to travel over so they can diffuse quickly.

Cell membranes

All cells and organelles are surrounded by a **partially permeable membrane** composed of a **sea of phospholipids** with protein molecules between the phospholipid molecules. The main function of the membrane is **controlling the movement** of substances in and out of the cell/organelle. However, it also contains **receptors** for other molecules, such as hormones, and enables **adjacent cells to stick together**.

The main structure of a membrane is the **phospholipid bilayer** - 2 rows of phospholipids (lipids made from **1 molecule of glycerol, 1 phosphate group and 2 fatty acid chains**). The phosphate groups are **hydrophilic** (water loving), so form the outside of the bilayer. Whereas the fatty acid chains are **hydrophobic** (water hating), so lie in between the 2 rows of phosphate heads.

The fatty acid chains are **non-polar**, allowing non-polar molecules like carbon dioxide to pass **straight through the phospholipid bilayer**. While **polar substances**, like water, have to move through **channel proteins**, since they aren't soluble in the fatty acid tails.

Fluid Mosaic Model

The fluid mosaic model is the name given to the model suggested for the structure of the cell membranes. It is described as **'fluid'** due to the **fluidity** of the phospholipid bilayer which allows all molecules to **move freely** within it.

The cell membrane also contains a **'mosaic'** of **transport proteins, receptor proteins, enzymes, structural and recognition proteins** of varying shapes and sizes. **Cholesterol** molecules are also found in the bilayer, these give the membrane **stability** and reduce its fluidity.

Scientific models such as the fluid-mosaic model are based on **data and results of investigations** by scientists. Models like this may be **updated** over time, the way the model of the atom was updated numerous times, as new data and discoveries are made.

Transport of substances

The movement of molecules through cell membrane depends on the **properties** of the molecule (for instance its size and whether it is polar or nonpolar) as well as the requirements of the cell. Movement can be **passive** (require no energy) or **active** (requires energy released from respiration). There are several types of movement:



- **Diffusion** is the **passive** movement of molecules **down a concentration gradient**, from an area of **high** concentration to an area of **lower** concentration through a **partially permeable membrane**. There are specific types of diffusion - simple diffusion, facilitated diffusion and osmosis.
- **Simple diffusion** is the **passive** movement of **small, non-polar lipid soluble molecules**, such as carbon dioxide and oxygen, from an area of high concentration to an area of low concentration. The molecules move **directly through the phospholipid bilayer**.
- **Facilitated diffusion** requires a **membrane protein** to transport polar molecules, charged and water soluble molecules across the membrane. Since these molecules cannot pass through the non-polar inside of the bilayer.
- **Osmosis** is the diffusion of **water molecules**.
- **Active transport** can transport all types of molecules through **carrier proteins** from an **area of low concentration to an area of high concentration**. This process moves particles **against the concentration**, and so requires energy in the form of **ATP**.
- **Exocytosis and endocytosis** transport **large particles**. The particles are enclosed in **vesicles** made from the cell surface membrane and transported **into** the cell / organelle in **endocytosis**. In **exocytosis**, vesicles containing large particles are **fused** with the membrane and **leave** the cell/organelle.

Osmosis - a special type of diffusion

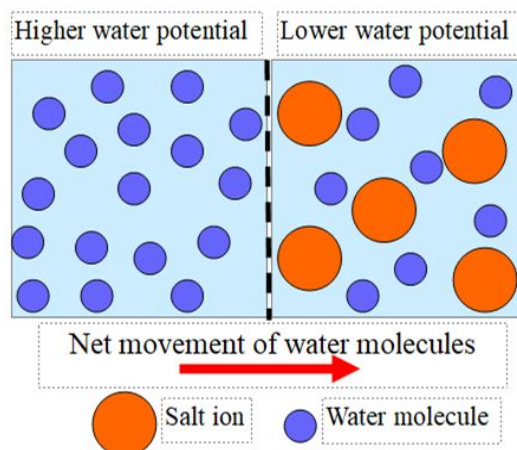
Osmosis is the net diffusion of water molecules from an area of **higher water potential** to an area of **lower water potential**, through a **partially permeable membrane**. In the case of osmosis, 'water potential' is used to describe the relative concentration of water molecules. Water potential is the **tendency of a solution to gain or lose water**.

A high water potential means there is a **low concentration of solute**, in other words a **high concentration of water**.

Pure water has the **highest** water potential possible. Water potential is measured in **pascals**, pure water has a value of **0 pascals** and all other values are **negative**, as water potential becomes **lower**.

When comparing 2 solution's water potentials, they can be described as:

- **Isotonic** - the 2 solutions have the **same** water potential.



- **Hypertonic** - the solution with a **lower** water potential relative to another solution (think 'hyper' - it has lots of sugars/salts in it like a hyper child, so has lower concentration of water, therefore a lower water potential).
- **Hypotonic** - the solution with a **higher** water potential relative to another solution.

Membrane proteins

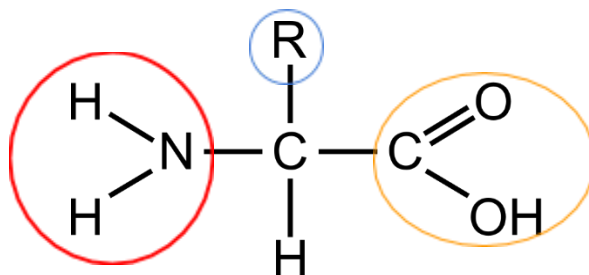
Different types of protein in a membrane are involved in different types of transport:

- **Carrier proteins** - can move particles through the membrane by both **active transport and facilitated diffusion**.
- **Channel proteins** - forms **pores** in the membrane for **polar particles** to move through by **facilitated diffusion**.
- **Extrinsic proteins** - a membrane protein that goes through only **1 layer of the bilayer**.
- **Intrinsic proteins** - a membrane protein that goes through **both layers of the bilayer**.

Proteins

Amino acids are the **monomers** from which proteins are made. Amino acids contain:

- **An amino group** – NH₂
- **A carboxylic acid group**
- **A variable R group** which is a carbon-containing chain



There are **20** different amino acids with different R groups. Amino **acids are joined by peptide bonds** formed in **condensation** reactions. A **dipeptide** contains **two** amino acids and **polypeptides** contain **three or more** amino acids.

The structure of proteins is determined by the **order and number** of amino acids, the **bonding present** and the **shape** of the protein:

- The **primary structure** of a protein is the **sequence and number of amino acids** in a protein.
- The **secondary structure** is the shape that the chain of amino acids **folds into** – either **alpha helix or beta pleated sheet**. The shape is determined by the **hydrogen bonding** between the peptide bonds.



- The **tertiary structure** of proteins is the **3D shape** of the protein, it can be **globular** or **fibrous**. Globular proteins, such as enzymes, are **compact**. Whereas fibrous proteins, such as keratin, are long and thus can be used to form fibres. The shape of the protein is determined by **hydrogen, ionic and disulphide bonds** between the **R groups** of amino acids.
- Some proteins have a **quaternary structure**, this is when **2 or more polypeptide chains** are joined together, sometimes with the addition of a **non-protein prosthetic group**.

KEY EXAMPLE: **Collagen** is a **fibrous protein** of great strength due to presence of both **hydrogen and covalent bonds** in its structure. Collagen molecules wrap around each other and form **fibrils** which form **strong collagen fibres**. Collagen forms the structure of bones, cartilage and connective tissue and is a main component of tendons which connect muscles to bones.

KEY EXAMPLE 2: **Haemoglobin** is a water soluble **globular protein** which consists of **two beta polypeptide chains**, **2 alpha polypeptide chains** and **4 haem groups**. It carries oxygen in the blood as oxygen can bind to the haem (Fe^{2+}) group, and oxygen is then released when required. Haemoglobin is made of 4 polypeptide chains as well as 4 prosthetic groups, so it has a **quaternary structure**.

Enzymes

Enzymes are **biological catalysts that increase the rate of reaction by lowering the activation energy** (the energy needed for a reaction to occur) of the reactions they catalyse, including both **intracellular** (within cells) and **extracellular** (outside of cells) reactions.

Part of the enzyme is known as the **active site**, this is where the reaction with the substrate takes place. Since enzymes are proteins, they have a very **specific 3D shape** due to the bonding in their tertiary structure. This means enzymes have a **specific and complementary shape** to the substrates they bind to, meaning that only **one type** of substrate fits into the active site of the enzyme.

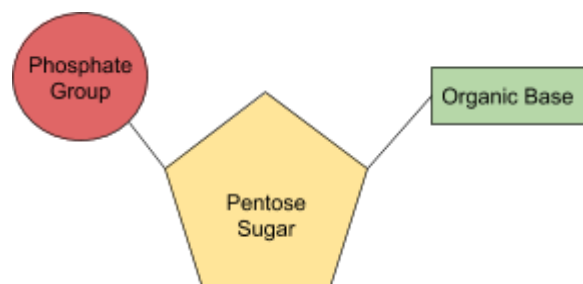
When the enzyme and substrate form a complex (an **enzyme-substrate complex**), the tertiary structure of the enzyme is **altered** so that the active site of the enzyme fits around the substrate. This is called the **induced fit model**. Once an enzyme-substrate complex is formed and there is **sufficient energy**, the reaction can take place, often breaking down the substrate or combining 2 to build up larger molecules.



Nucleotides

Both **deoxyribonucleic acid (DNA)** and **ribonucleic acid (RNA)** are **polymers** of nucleotides. Nucleotides consist of:

1. A **pentose sugar** - a 5 carbon sugar
2. A nitrogen containing **organic base**
3. A **phosphate group**



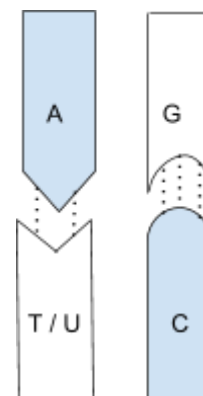
The components of a DNA nucleotide are a pentose sugar called **deoxyribose**, a **phosphate group** and **one** of the organic bases **adenine**, **cytosine**, **guanine** or **thymine**. Adenine and guanine both have **double ring structure** and are classified as **purine bases**.

The components of an RNA nucleotide are a pentose sugar called **ribose**, a **phosphate group** and one of the organic bases **adenine**, **cytosine**, **guanine** or **uracil**. Thymine, uracil and cytosine all have **single ring structure** and are classified as **pyrimidine bases**.

Nucleotides join together by **phosphodiester bonds** formed in **condensation reactions**. The phosphodiester bonds are formed between the **phosphate groups** and a **carbon** on the pentose sugar of adjacent nucleotides.

Complementary base pairing

A DNA molecule is a **double helix** composed of **two polynucleotides chains** **running antiparallel to each other**, joined together by **hydrogen bonds** between the 2 strands. **2** hydrogen bonds form between the complementary bases **adenine and thymine**, and **3** hydrogen bonds form between the complementary bases **cytosine and guanine**. This bonding is essential for DNA to maintain a **stable structure**, as it prevents the chemical bases being corrupted by other outside chemicals or forces. The bonding is also what twists the strands into the double helix shape.



RNA is a **single-stranded polynucleotide chain**, so does **not** have hydrogen bonding between the bases within it, however its bases are still complementary to each other - **cytosine and guanine**, and **adenine and uracil** are complementary.

DNA replication

The **semi-conservative** replication of DNA ensures **genetic continuity** between generations of cells, meaning that genetic information is passed on from one generation from the next. The process is described as 'semi-conservative' because each strand formed contains **1 new strand**,

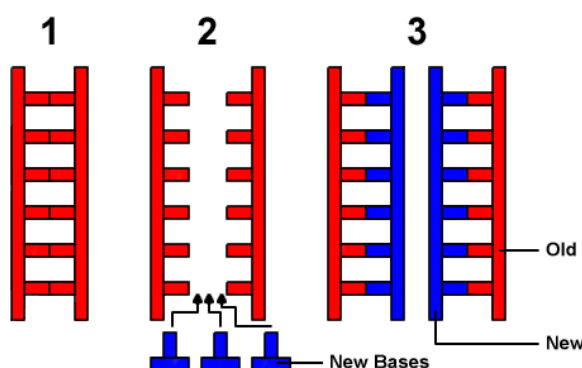


and 1 original strand. The steps of semiconservative replication of DNA are as follows:

1. The double helix **unwinds** and the enzyme **DNA Helicase** breaks the **hydrogen bonds** between the complementary bases, **separating** the two strands of DNA.

2. One of the strands is used as the **template** and **complementary base pairing** occurs between the template strand and **free nucleotides** that attach to the exposed strands.

3. The enzyme **DNA polymerase** moves along the strands, joining the adjacent nucleotides by forming **phosphodiester bonds** in **condensation** reactions.



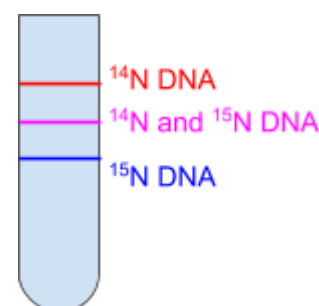
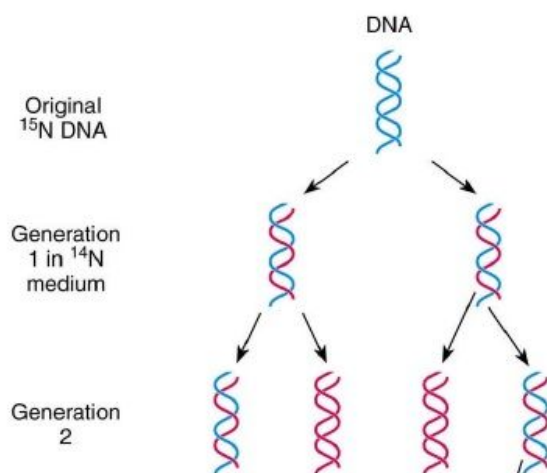
Meselson and Stahl's experiment

2 scientists named Matthew Meselson and Franklin Stahl did an experiment to prove that DNA replicated semi-conservatively. This was what they did:

1. They began by growing bacteria in a broth containing only **one isotope of nitrogen - Nitrogen-15**, a heavier isotope than the more abundant Nitrogen-14. After allowing the bacteria to grow and take the heavy nitrogen into their DNA they isolated the DNA and **centrifuged it; the DNA settles at a point equal to its density.**

2. The bacteria containing only ^{15}N DNA were transferred to a broth now containing only a ^{14}N medium. Since DNA replicates semi-conservatively, after the first replication of DNA, each double helix contained **1 ^{14}N strand, and 1 ^{15}N strand**, so settled at a different point when centrifuged. The scientists observed this was between the settling points of ^{15}N only DNA, and ^{14}N only DNA, so concluded the DNA must contain **one strand of each.**

3. They then carried out a **second replication** of the DNA, still in the ^{14}N medium, the results of the centrifuge confirmed the semi-conservative hypothesis still, with half of the DNA settling out at the ^{14}N only point, and half of the DNA settling with a combining ^{14}N and ^{15}N point.



The genetic code

The **order of nucleotide bases** on DNA makes up the **genetic code** which consists of **triplets of bases**; each triplet of bases codes for a particular **amino acid** and is known as a **codon**. For instance, the codon GCA codes for the amino acid alanine. In **ribosomes** during protein synthesis the amino acids are joined together by **peptide bonds** and form a **polypeptide chain**. Therefore, a gene is a sequence of bases on a DNA molecule that codes for a sequence of amino acids in a polypeptide chain. However, not all of the genome codes for proteins – the **non-coding** sections of DNA are called **introns** and the **coding** regions are called **exons**.

Features of the genetic code:

- The genetic code is **non-overlapping** meaning that **each triplet is only read once** and triplets **don't share** any bases.
- Genetic code is also **degenerate** meaning that **more than one triplet codes for the same amino acid**. This reduces the number of mutations which are mistakes in the base sequence such as base deletion, insertion or substitution. For instance, GCA, GCC, GCG and GCU all code for the amino acid alanine.
- The genetic codes contains **start and stop codons** which either start or stop protein synthesis.

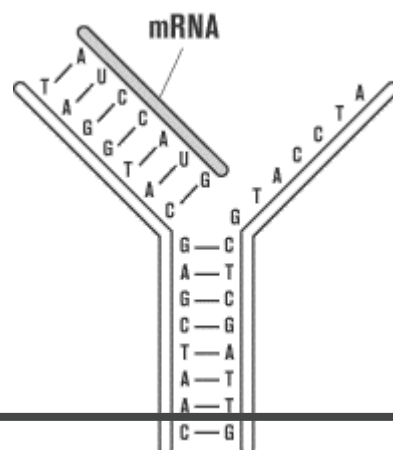
Protein synthesis

There are 2 stages which convert the sequence of bases on DNA into a polypeptide chain; the DNA must first be copied into **mRNA (transcription)** which then leaves the nucleus and travels to a **ribosome**. This is where the RNA is read and translated into amino acids which are joined to make a **polypeptide (translation)**.

Transcription

During transcription, a **molecule of mRNA** is made in the nucleus:

1. The enzyme **RNA polymerase** attaches to the DNA at the start of the gene (which is signified by a **start codon**). It breaks the **hydrogen bonds** between the complementary bases that hold the 2 strands together, this **uncoils and separates** the 2 strands so they are exposed.

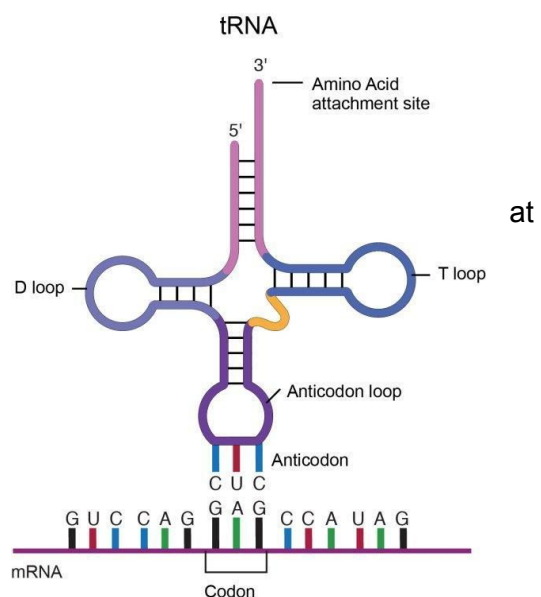


- One of the DNA strands is used as a **template** to make the mRNA molecule, the template is called the **antisense strand**.
- RNA polymerase** lines up **free nucleotides** which attach to the template strand by **complementary base pairing**; adjacent nucleotides are joined by **phosphodiester bonds**, thus forming a **single-stranded molecule of mRNA**.
- Once the RNA polymerase reaches a **stop codon**, the mRNA detaches from the template strand. It then moves out of the nucleus through a **pore** and attaches to a **ribosome** in the cytoplasm, which is the site of next stage of protein synthesis called translation.

Translation

During translation, a polypeptide sequence is translated from the mRNA strand:

- mRNA attaches to a **ribosome** and **transfer RNA** collects amino acids from the cytoplasm and carries them to the ribosome. tRNA is a **single stranded** molecule with an **amino acid binding site** at one end (so it can only carry one type of amino acid), and a **triplet of bases** the other (called an **anticodon**) which is **complementary** to a triplet of bases on the mRNA strand (the **codon**) produced during transcription.
- The tRNA molecule attaches itself to mRNA by **complementary base pairing** – within the ribosome **two molecules of tRNA** attach to the mRNA strand at a time.



- The amino acids attached to two the tRNA molecules join by forming a **peptide bond**; then the tRNA molecules **detach themselves** from the amino acids, leaving them behind as more amino acids attach to the chain.
- This process is repeated leading to the formation of a **polypeptide chain** until a **stop codon** is reached on mRNA, which ends the process of protein synthesis.



Genetic Mutations

Since proteins are coded for by the sequence of bases on DNA, any errors made in copying the DNA during replication can affect the polypeptide produced, since **a different amino acid means different folding and bonding so a different tertiary structure and 3D shape.**

In some cases this can result in **non-functional proteins** and lead to **cancer**, for instance if a protein that slows cell division is non-functional, this can lead to the formation of a cancerous tumour. **Genetic disorders** are also often caused by **mutation**, such as the mutation which leads to production of sticky mucus and causes **cystic fibrosis or sickle cell anaemia**, in which a mutated form of haemoglobin distorts the shape of red blood cells.

The majority of mutations are **not harmful** however, due to the nature of the genetic code, and the presence of **non-coding introns**. As introns do not code for proteins so if a mutation occurs here, no polypeptide will be affected. There are several types of mutation:

- **Substitution** - this is where **one base is substituted for another**. For instance, the sequence ATGGCA to ATCGCA. In some cases, the mutation may not change the amino acid coded for, since the **degenerate nature** of the genetic code means multiple codons code for the same amino acid. Sometimes however it does result in a different amino acid.
- **Insertion** - this is where **an extra base (or bases) is inserted into the DNA sequence**. For instance GGCTAC to GGCTTTAC. This mutation often results in a **non-functional** protein as **all of the codons after the insertion are affected** as the code is non-overlapping. This is known as **frame shift**.
- **Deletion** - this is where **a base (or bases) is removed from the sequence**. For instance, TGCAAC to TGAAC. This again results in **frame shift** and a likely **non-functional** protein as all codons after the deletion are changed.

Genetic disorders

Important definitions:

In order to understand the genetics topic fully, you must be confident with the following definitions:

- **Gene** - a **sequence of bases on a DNA** molecule that codes for a sequence of amino acids in a **polypeptide** chain
- **Allele** – a **form of a gene**. For instance, one form of a gene for eye colour may code for blue eyes, another may code for brown eyes
- **Genotype** – The **genetic constitution** of an organism, the alleles they have



- **Phenotype** – The **physical characteristics** expressed by an organism due to its genotype
- **Recessive** – The allele that must be **present twice** in the genotype to be expressed in the **phenotype**
- **Dominant** – The allele that only needs to be **present once** in the genotype to be expressed in the **phenotype**
- **Codominance** – Alleles in the genotype that **both contribute to the phenotype**. For example the genotype AB for blood group results in the phenotype AB
- **Homozygote** – When an organism has **2 of the same alleles** for a characteristic
- **Heterozygote** - When an organism has **2 different alleles** for a characteristic

Inheritance of genetic disorders

Monohybrid inheritance is when we consider the inheritance of 1 gene at a time when 2 parents have offspring. There are multiple combinations possible, since during meiosis only **1 chromosome** from each **homologous pair** goes into the **gamete** cell. Here are some common genetic crosses:

Key:

B : Dominant allele for brown eyes

b : Recessive allele for blue eyes

Cross 1:

Homozygous dominant parent x **homozygous recessive** parent

Parent genotypes: **BB, bb**

Possible gametes: **B,B and b,b**

	b	b
B	Bb - brown eyes	Bb - brown eyes
B	Bb - brown eyes	Bb - brown eyes

Phenotypes: Brown eyes

Phenotype ratio: **100%**

Cross 2

Heterozygous parent x **heterozygous** parent

Parent genotypes: **Bb, Bb**

Possible gametes: **B,b and B,b**

	B	b
B	BB - brown eyes	Bb - brown eyes
b	Bb - brown eyes	bb - blue eyes

Phenotypes: Brown eyes, blue eyes

Phenotype ratio: **3:1**



Cross 3

Heterozygous parent x **homozygous recessive** parent

Parent genotypes: **Bb, bb**

Possible gametes: **B,b and b,b**

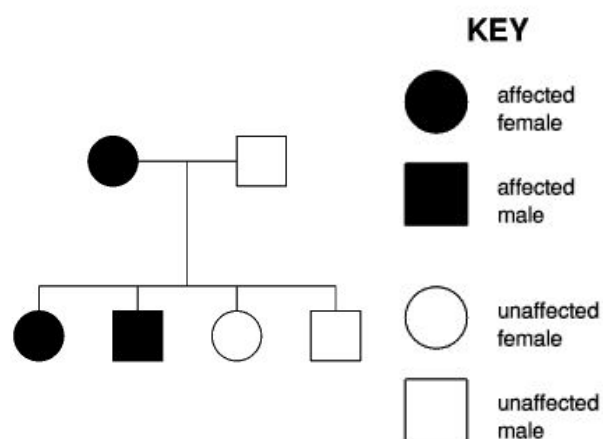
	b	b
B	Bb - brown eyes	Bb - brown eyes
b	bb - blue eyes	bb - blue eyes

Phenotypes: Brown eyes, blue eyes

Phenotype ratio: **1:1**

Genetic pedigree diagrams

These diagrams are essentially **family trees** that look at the **occurrence of a genetic disorder**. They can be used to work out an individual's **genotype** and a couple's chance of **passing on the disorder** to offspring. For instance, if 2 parents both exhibiting a **dominant** characteristic had a child expressing the **recessive** characteristic, the parents must both be **heterozygous** for the trait and the child is homozygous recessive for the trait.



Sex-linked characteristics

The 23rd pair of chromosomes in a human can be **XX, coding for a female, or XY, coding for a male**. The Y chromosome is much **smaller** than the X chromosome and is described to be almost '**genetically empty**' as it contains much fewer genes than the X chromosome. This means in males some genes are only present once, meaning **recessive disorders more common in males**, as they only need **one copy** of the recessive gene, whereas females would need **2 copies** on both X chromosomes, which is less likely. These disorders are known as '**sex-linked disorders**' as they are caused by genes present on the **sex chromosomes**.

A common example of one such disorder is **red-green colour blindness**, which is much more common in men and affects the sufferer's ability to distinguish red and green colours. Although their ability to distinguish other colours such as blue and yellow is, for most people, unaffected. On average 8% of men suffer with it, and only 0.5% of women; providing evidence that the disorder is **sex-linked**.

Cystic fibrosis

Cystic fibrosis is a **genetic disorder** caused by a **faulty, recessive allele** on chromosome 7. The faulty gene produces a **non-functional CFTR protein** which is responsible for transporting **chloride ions** out of the cell.



Gaseous exchange

In the respiratory tract, **chloride ions** in a healthy person are transported out of cells into mucus lining the **epithelium**, this **lowers the water potential** of the mucus causing water to also move out of the cell, via **osmosis**. This makes the mucus sticky enough to **trap pathogens** that pass through the respiratory tract when we breathe. People with cystic fibrosis **do not** have the movement of **chloride ions out of the cell**, so **water does not move out of the cell** either, this makes the mucus **too thick and sticky** meaning the **cilia cannot move**. This results in pathogens getting stuck and remaining in the tract and often causing **infections**.

Reproduction

In the reproductive system mucus is also thickened. For women this can thicken their **cervical mucus** and make it harder for them to get pregnant, and in men the mucus can block the tube (**vas deferens**) that transports sperm to the end of the penis, also **reducing their fertility**.

Digestion

In the digestive system, thick mucus can **block the pancreatic duct**, out of which **digestive enzymes** pass. This means less enzymes enter the small intestine, so less food is broken down and absorbed, **preventing normal growth**. In the long term, the digestive enzymes that are not released from the pancreas can start to breakdown the pancreas, if the cells producing insulin are affected, patients can also develop **diabetes**.

Genetic Screening

Genetic screening is a branch of **gene technology** which involves testing people's DNA for the presence of certain **genetic disorders**, like cystic fibrosis. Since some disorders have different types (such as breast cancers being caused by different genes) by identifying the specific gene causing a disorder, the most effective treatment can be chosen for the individual. There are further uses to genetic screening:

- **The identification of carriers** - a carrier is someone who has a **recessive allele** for a genetic trait in their genes, but **does not usually express the trait** or show symptoms for the disorder as they have a **dominant, working copy** of the gene too. It is important to be aware if you are a carrier of a genetic disease, as carriers do not suffer themselves but can still **pass on the disorder to children**. For instance, 2 carriers of cystic fibrosis have a 25% chance of having a child with the disorder, so it can help parents make informed decisions about having children.
- **Preimplantation genetic diagnosis (PGD)** - If 2 parents are at risk of passing on a severe genetic disorder to their child, and want to avoid doing so, they can have PGD. The **embryos** must be produced via **in-vitro fertilisation (IVF)** in a lab, so they can be screened for the disorder to **identify healthy embryos** to be implanted into the mother.



- **Prenatal testing** - prenatal testing tests for the presence of genetic disorders and incorrect numbers of chromosomes **once the fetus is already growing**. It can help parents make decisions on whether to continue the pregnancy and also how to prepare if they are going to have a child who does have a genetic disorder. There are 2 main ways prenatal screening can be done:
 - **Amniocentesis** - This involves extracting a small sample of **amniotic fluid** from the amniotic sac. The fluid contains **fetal tissue** so can be screened for disorders.
 - **Chorionic villus sampling** - This involves taking a **small sample of cells** from the **placenta** and testing those.

Ethics of genetic screening

Religion

It is likely that a religious person's views on genetic screening differ on an **individual basis**, but a common argument is that most religious groups view **life as a sacred gift from God**, so screening for disorders is irrelevant as the baby should live regardless. Some religious people do believe, however, that **the life of the mother is worth more** than the life of the unborn baby, so should the disorder cause any **risk to the mother** then they may agree with aborting it.

Moral

Genetic screening can sometimes result in **false-positive or false-negative results**, meaning potentially a foetus could be aborted due to an incorrect diagnosis, leading to unnecessary loss of lives. People who believe **quality of life** is extremely important may argue in favour of genetic screening, as they believe it's good to end a life that would likely otherwise be filled with **pain and suffering**. However, **understanding** that your child will have a certain disorder can help parents best prepare for it.

Social

Socially, the acceptance of testing for disorders and sometimes aborting babies with those disorders can encourage the idea that disabled lives are **worth less in society**, so encourage **prejudice and discrimination** against those groups. Yet, genetic screening can **increase public awareness and understanding** about gene technology and genetic disorders.

Further ethical concerns include:

- There's a **risk of harm** to the foetus of miscarriage
- The outcome of testing might lead to an **abortion**
- **Right to life**
- The **cost** of bringing up a baby with a genetic disorder
- **Emotional and mental issues** surrounding the birth of a baby with a disorder

